



**MiBoards Polycolour®** polyester sheets are fire retardant, lightweight, semi-rigid and acoustically absorbent panels with a felt like finish.

They are made from 100% PET plastic which depending on the colour, contain up to 70% recycled post-consumer material, mainly plastic drinks bottles and are recyclable in the PET waste stream. They can be installed on interior walls and ceilings as decorative acoustic tiles, suitable for schools, university student accommodation and office pinboards or full wall coverings.

The production process is clean, utilizing needle punch and thermo-bonding technology resulting in low energy production with no emissions, no off gassing or VOC's, no waste water and does not require the use of any adhesives or chemical binders. All waste material is 100% recyclable in the manufacturing process.





### **Product benefits:**

- Highly Durable providing long term performance guaranteed for 5 years
- Fully compliant with UK fire regulations for Installation in school classrooms & corridors, public spaces, gyms, music studios and offices
- Printer friendly surface
- contains up to 70% recycled post-consumer plastic waste
- Easily cut to size on site with no framing required
- Delivers excellent acoustic performance and thermal properties
- Free of any harmful chemicals
- Lightweight, stable, dust free and impact resistant
- Easy to install with screw fix and cups, Velcro mount or suitable adhesive
- Standard and bespoke colours available
- Bespoke sizing, aluminium or wood framing options available on request

### **Handling and Storage guidelines:**

Store sheets indoors, horizontally with support to keep sheets flat, Wear clean gloves when handling the sheets

### **Cleaning and care guidelines:**

Remove dust and dirt by dusting, vacuuming or with a soft, damp cloth and blot dry, Keep out of direct sunlight and avoid exposure to heat 65°C or greater

### **Sheet specifications:**

Standard sheet size: 2440x1220x9mm, Sheet weight: 5.5kgs, Density: 1900gsm<sup>2</sup>, packed in boxes of 10 sheets per colour

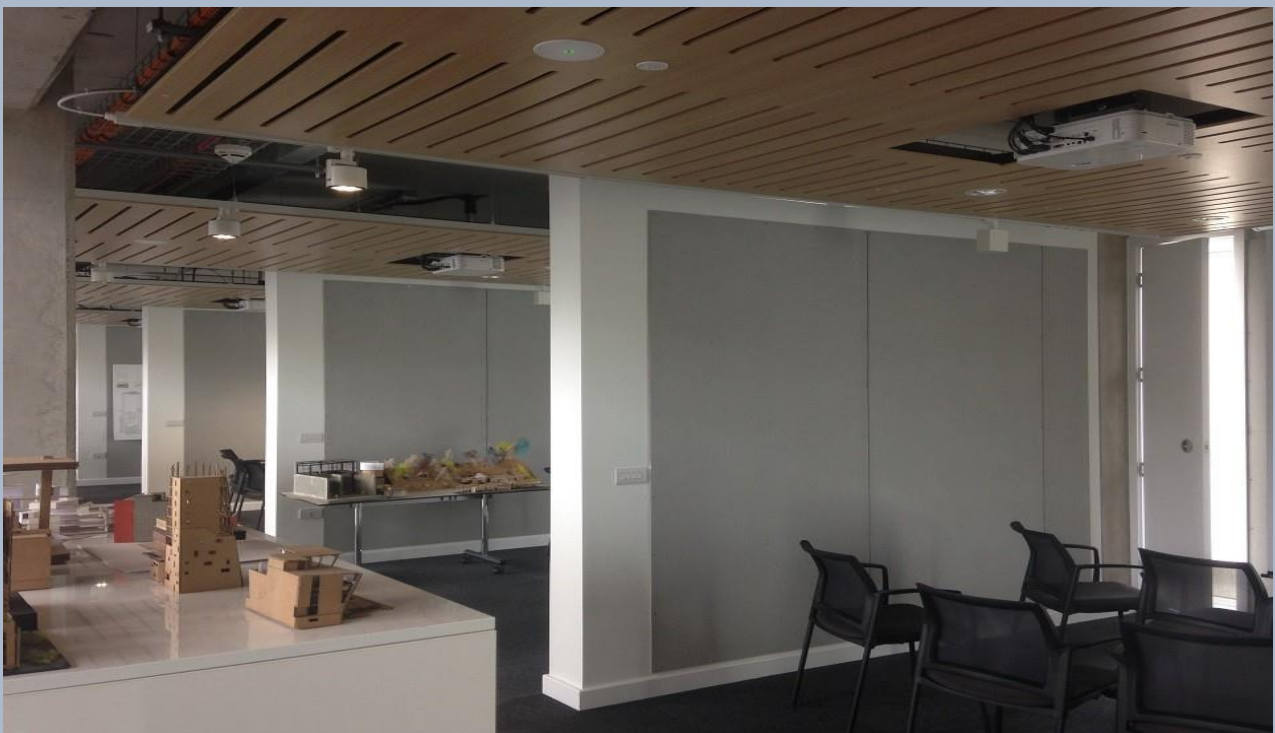
Fire rating: Class B to BSEN13501-1:2007+A1:2009, Acoustic rating: EN ISO 11654 Class E  
EN12667:2001 0.036 [W/(m·K)] Thermal Conductivity /0.25[(m<sup>2</sup> ·K)/W] Thermal resistance





Colour swatch:

Stock Colours available: Wheat, purple, green, slate grey, red, light grey, oxford blue and black  
(bespoke colours / sizes available on request)





### Packaging specifications:

Packaged in boxes of 10 sheets per colour (pack weight 55kgs), 10 packs per pallet and labelled as below:

 Polycolour FR®Sheets 2440x1220x9mm 10 per Box PCP2412UKP27 <b>BLACK</b>	 Polycolour FR®Sheets 2440x1220x9mm 10 per Box PCP2412UKP11 <b>LIGHT GREY</b>
 Polycolour FR®Sheets 2440x1220x9mm 10 per Box PCP2412UKP12 <b>SLATE GREY</b>	 Polycolour FR®Sheets 2440x1220x9mm 10 per Box PCP2412UKP23 <b>OXFORD BLUE</b>
 Polycolour FR®Sheets 2440x1220x9mm 10 per Box PCP2412UKP06 <b>WHEAT</b>	 Polycolour FR®Sheets 2440x1220x9mm 10 per Box PCP2412UKP17 <b>RED</b>
 Polycolour FR®Sheets 2440x1220x9mm 10 per Box PCP2412UKP19 <b>PURPLE</b>	 Polycolour FR®Sheets 2440x1220x9mm 10 per Box PCP2412UKP53 <b>GREEN</b>

