

# WALLPOD:EV

## HOMESMART EV

Type 1, Mode 3 Tethered Lead  
3.6kW or 7.2kW

**ROLEC**  
EV Charging

MANUFACTURED IN THE UK



In partnership with

**ev.** energy



Unit shown: WALLPOD:EV  
HOMESMART EV  
Type 1, Mode 3 Tethered Lead

The WallPod:EV HOMESMART is a smart charging unit which has been designed to provide the user with a simple, mobile phone interactive EV charging solution for the home.

The EV driver can control the charging activity of their WallPod:EV HOMESMART unit using their mobile phone, as well as allowing them to monitor / record all their charging activity, data and history.

This type 1 tethered lead charging unit offers either 3.6kW or 7.2kW mode 3 charging speeds.

## PRODUCT FEATURES

- Smart charging (see smart features)
- Mode 3 (IEC 61851-1) fast charging
- Type 1 (J1772) tethered lead (available in two lengths) & lead holder
- 3.6kW (16A) & 7.2kW (32A) charging speeds
- Supplied with external overload & fault current protection (Type A RCBO)
- Built-in DC sensitive protective device
- Built-in LED charging status indicator
- Built-in Class 1 MID compliant kWh meter
- Built-in Modem and roaming sim
- Built-in GPRS communication antenna
- OZEV Grant Fundable under the Electric Vehicle Homecharge Scheme\*
- IP Rated and UV Stabilised
- Corrosion resistant, fire retardant & impact resistant design
- Easy to install and maintain

## SMART FEATURES

- Live Charging Activity**
  - Charging status
  - Stop / start charging
  - Smart & boost charging
  - Charging notifications
- Charging History**
  - Total energy used
  - Historical data
  - CO<sub>2</sub> savings
- Advanced Settings**
  - Tariff optimisation
  - Green charging
  - Grid services
  - Fleet management



See the HOMESMART EV Overview for details



Grant Fundable  
Models Available



GPRS  
Connectivity



Mobile App Controlled  
SMART Charging



Colour Options  
Available




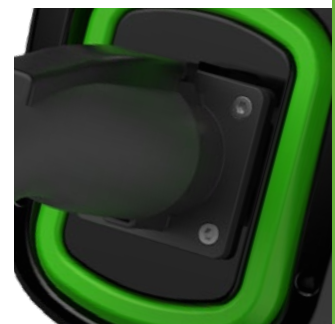
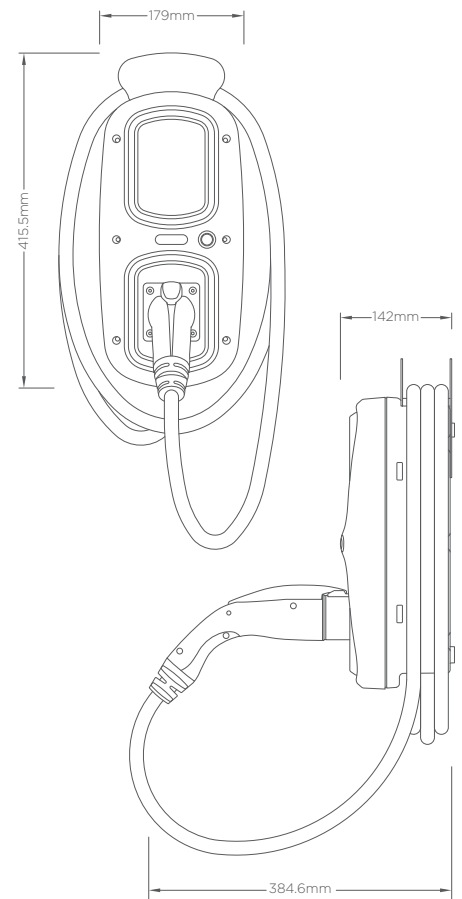
Safety In The  
Home Certified



IP Rated &  
UV Stabilised

## SPECIFICATIONS

Product Code	EVHS1080	EVHS1140	EVHS1085*	EVHS1145*
Charging Gun	Type 1 (J1772) 			
Charging Cable Length	5m (approx. 4.5m external)		10m (approx. 9.5m external)	
Rated Output	3.6kW	7.2kW	3.6kW	7.2kW
Rated Current	16A	32A	16A	32A
Charge Protocol	Mode 3			
Input Voltage	230V AC/50Hz (Single Phase)			
Overload & Fault Current Protection	External 30mA Type A RCBO & Built-in 6mA DC Sensitive Device			
	20A	40A	20A	40A
Cable Terminals	3x 16mm			
Communications	GPRS (Requires a signal strength of 14 CSQ or above)			
Standby Consumption	Approx 0.05kWh per day			
Certifications & Compliances	EV Charging Compliance – EN 61851-1:2001, EN 61851-21:2002, EN 61851-22:2002 Wiring Regulations – BS 7671 EMC Compliance – EN 61000-6-3:2007, EN 61000-6-2:2005 Safety Compliance (LVD) – 2014/35/EU, EN 62368-1:2014 Environmental Protection – Enclosure IP65, Socket IP54 (BS EN 60529:1992+A2:2013)			
CE				
Dimensions	179mm x 415.5mm x 142mm (W x H x D)			
Unit Material	Polycarbonate (303 EP-22)			
Operating Temperature	-30°C to +50°C			
Standard Base Colour	Black (Other colours available upon request)			
Standard Pod Colour	Green (Other colours available upon request)			



## HOMESMART EV

- Built-in modem and GPRS signal antenna
- Built-in roaming Sim card connects directly to the strongest signal
- ev.energy Back Office management
- Smart charging control via the ev.energy smartphone app



## OPTIONS & ACCESSORIES

- Corporate branding (colours, logo badge, etc.)
- Wall mounted charging gun holster
- High gain, remote mounted GPRS signal antenna

\*10m versions NOT eligible for OZEV EVHS grant funding

Images are for marketing purposes only and are not contractual © 2021



Head office contact:  
t: +44 (0) 1205 724754  
f: +44 (0) 1205 724876  
rolec@rolecserv.co.uk

Rolec Services Ltd  
Ralphs Lane, Frampton West  
Boston, Lincolnshire  
UK. PE20 1QU

 @RolecEV  
 /Rolec-Services  
[www.rolecserv.com](http://www.rolecserv.com)

EVVPHST1D-V01-R3 WallPod EV HomeSmart Type1 Tethered - Data Sheet